

Specialty Control Devices

Limit Switches

CR115B

Precision Snap-Acting Limit Switches

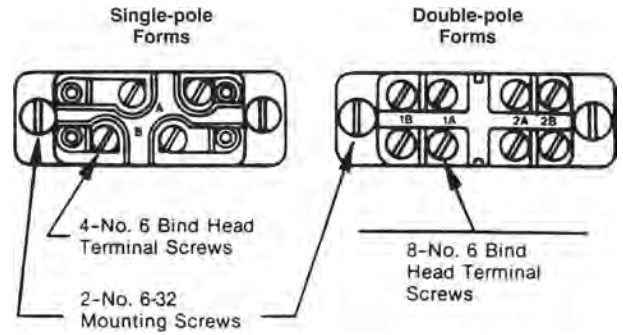
CR115B Snap-Acting Limit Switches

Product Form	Contact Configuration	Product Number	List Price GO-10G6
Basic	SPDT (1 NO-1 NC)	CR115B1 ¹	\$18.00
Basic	SPDT (1 NO-1 NC)	CR115B2 ²	\$18.00
Roller Lever	SPDT (1 NO-1 NC)	CR115B201 ²	\$30.00
Plunger	SPDT (1 NO-1 NC)	CR115B202 ²	\$41.00
Basic	DPDT (2 NO-2 NC)	CR115B4 ³	\$36.00
Roller Lever	DPDT (2 NO-2 NC)	CR115B401 ³	\$48.00
Plunger	DPDT (2 NO-2 NC)	CR115B402 ³	\$59.00

- ¹Forms with 0.020-inch Contact Gap. Double throw circuits must be same polarity.
²Forms with 0.040-inch Contact Gap. Double throw circuits must be same polarity.
³Double-Pole Forms. Circuits 1A and 1B are electrically isolated from circuits 2A and 2B. Connections to 1A and 1B or to 2A and 2B must be same polarity.

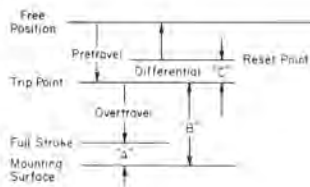
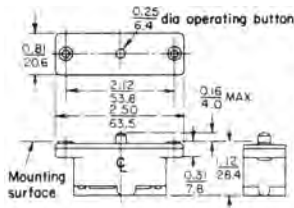
Plunger Accessory Kit

Application	Product Number	List Price GO-10G6
Use with basic switch of double-pole forms and 0.040-inch gap forms to make plunger-type switch.	CR115X3	\$22.50

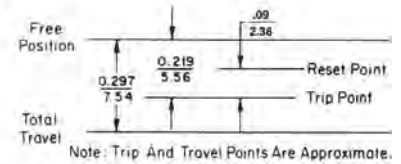
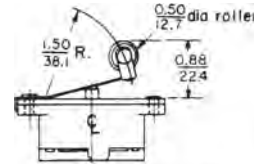


Terminal Connections

Outlines and Dimensions (in/mm) For Estimating Only



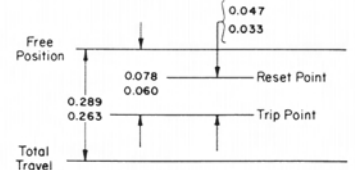
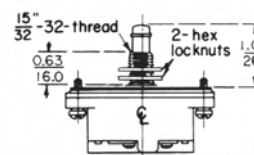
Basic Switch—Approx. shipping wt., 2 oz.



Roller Lever Type Switch—Approx. shipping wt., 2 oz.

Basic Switch Dimensions

Form	A	B	C	Trip Force (oz.)
.020-inch gap	.037	.079	.025	7-11
.040-inch gap	.037	.079	.047	10-14
Double-pole	.040	.088	.046	10-14
	.014	.058	.025	



Plunger Type Switch—Approx. shipping wt., 2 oz.



Publications and Reference: See Section 17 for a complete list of additional product-related publications

Specialty Control Devices

Limit Switches

CR115B

Precision Snap-Acting Limit Switches
15 Amperes Continuous
AC/DC

Application

Designed for rugged industrial use in a small space and where highly repetitive operation is desired. These highly accurate switches require only a small amount of plunger travel to actuate. One- and two-pole forms are available.

The basic switch is equipped with a button-type operator. Plunger-type forms are available for mounting behind the panel with only the button protruding. Roller lever forms are available for applications requiring a transfer of the axis of motion or for detection of objects passing the switch.

Typical applications include controlling solenoids, opening and closing valves, and controlling small horsepower motors.

Features

- Wear-resistant nylon button: retains perfect alignment with operating parts.
- Rugged molded enclosure: resists arc-over and shock.
- Operating head: available in button-, plunger-, and roller-lever types; plunger operator also available as accessory kit.

Contact Ratings-AC

Single-Pole Forms

Volts	Alternating Current	
	Make	Break
115	40 amp	15 amp
230	20 amp	10 amp
460	10 amp	6 amp
575	8 amp	5 amp

Double-Pole Forms

Volts	Alternating Current	
	Make	Break
0-115	30 amp	3 amp
116-600	3450 Va	345 Va

SPST forms are suitable for control of 1/2-hp motors at 115/230 Volt ac. Double-pole forms are suitable for 10 amperes continuous maximum ac. Single-pole forms—15 amperes maximum ac.

Contact Ratings-DC

Forms with 0.02-inch gap

Volts	Direct Current—Break Ratings	
	SPDT Forms	SPST Forms
120	0.25 amp	0.50 amp
240	0.10 amp	0.25 amp
600	—	0.05 amp

Forms with 0.04-inch gap

Volts	Direct Current—Break Ratings	
	SPDT Forms	SPST Forms
120	0.50 amp	2.0 amp
240	0.20 amp	0.5 amp
600	0.02 amp	0.1 amp

Double-Pole Forms

Volts	Direct Current—Break Ratings	
	SPDT Forms	SPST Forms
120	0.2 amp	1.0 amp
240	0.1 amp	0.3 amp
600	—	0.1 amp



CR115B2 Basic Switch



CR115B201 Roller Lever Form



CR115B202 Plunger Type

